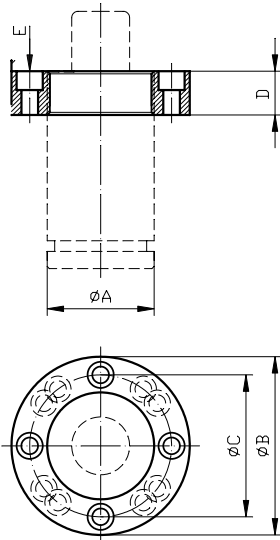



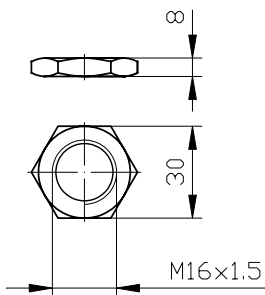
NTS./NTFR./NTFRS./NTFRB.
NTS./NTFR./NTFRS./NTFRB.


NTFRB.

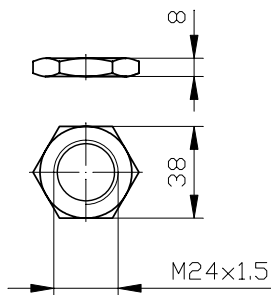



Typ Type	$\varnothing A$	$\varnothing B$	$\varnothing C$	D	E
NTFRB	45	86	65	20	4 x M8
NTFRB	50	100	75	25	4 x M10
NTFRB	63	125	100	25	6 x M10
NTFRB	75	125	100	25	6 x M10
NTFRB	95	145	120	25	8 x M10
NTFRB	120	170	145	35	8 x M10

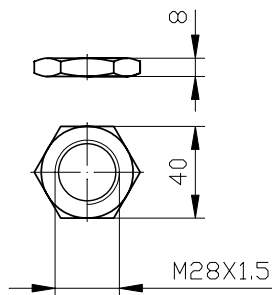
NTS.16 




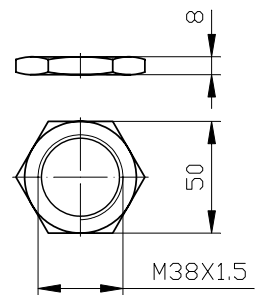
NTS.24 




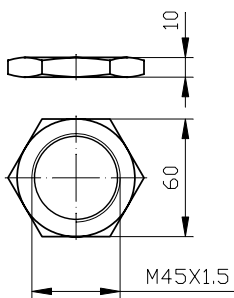
NTS.28 




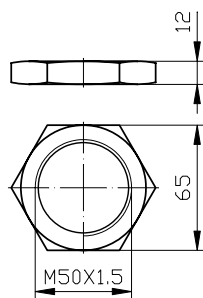
NTS.38 



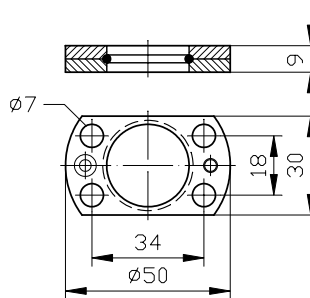
NTS.45 



NTS.50 



NTFR.25.2 



NTFRS.38 

